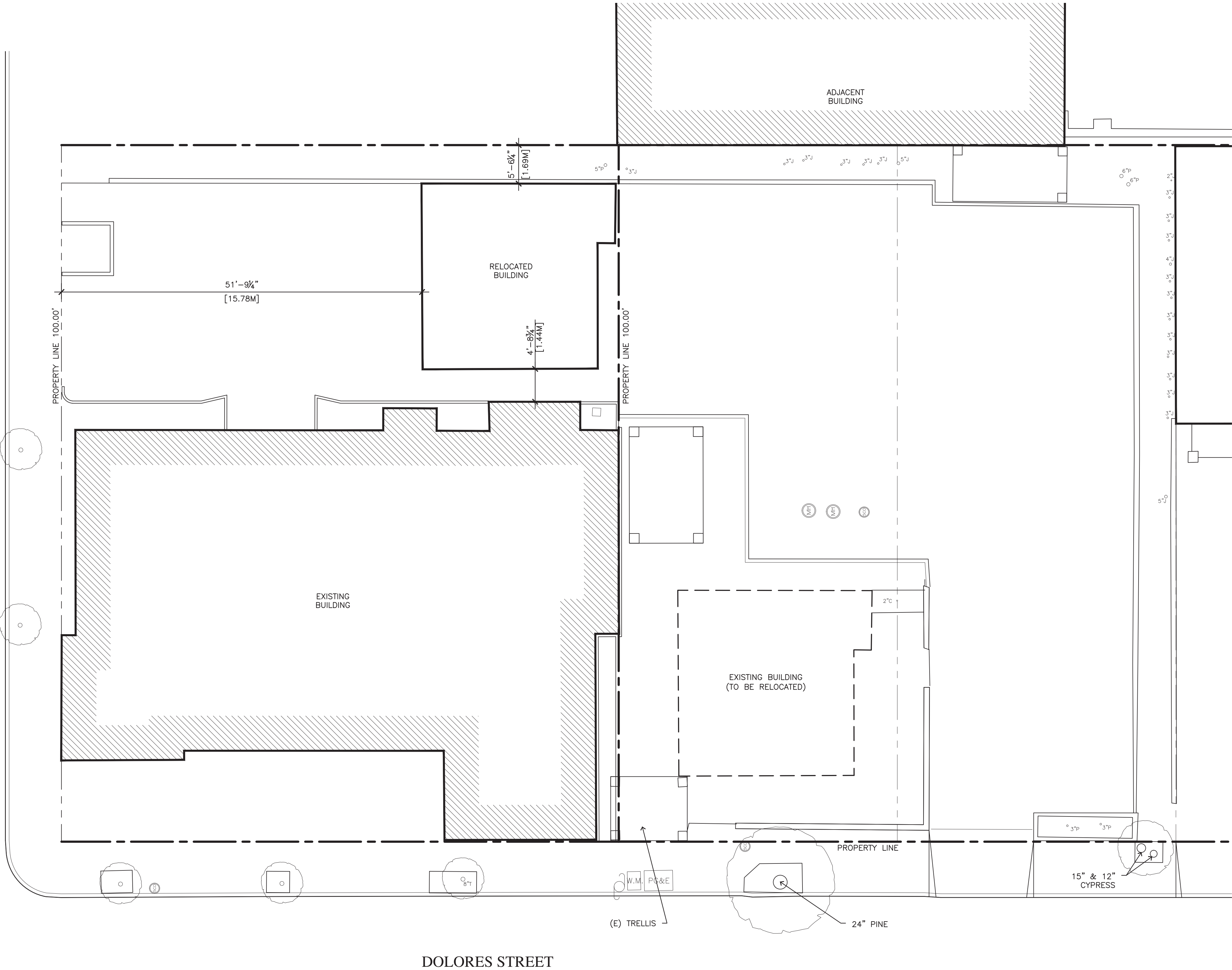
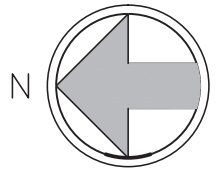
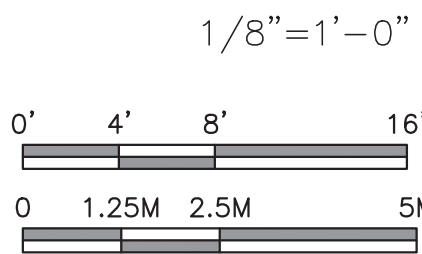


7TH AVENUE



SITE PLAN



JUN A. SILLANO, AIA



ARCHITECTURE • PLANNING • INTERIOR DESIGN

721 LIGHTHOUSE AVE
PACIFIC GROVE CA.
93950

PH (831) 646-1261
FAX (831) 646-1290
EMAIL idg@idg-inc.net
WEB idg-inc.net

DISCLAIMER:
ALL IDEAS, DESIGNS, ARRANGEMENTS AND PLANS INDICATED BY THIS DRAWING ARE OWNED BY, AND THE PROPERTY OF THIS OFFICE AND WERE CREATED, EVOLVED AND DEVELOPED FOR USE ON, AND IN CONNECTION WITH, THE SPECIFIED PROJECT. NONE OF SUCH IDEAS, DESIGNS, ARRANGEMENTS OR PLANS SHALL BE USED BY OR DISCLOSED TO ANY PERSON, FIRM OR CORPORATION FOR ANY PURPOSE WHATSOEVER WITHOUT THE WRITTEN PERMISSION OF INTERNATIONAL DESIGN GROUP. WRITTEN DIMENSIONS ON THESE DRAWINGS SHALL HAVE PRECEDENCE OVER SCALE DIMENSIONS. CONTRACTORS SHALL VERIFY AND BE RESPONSIBLE FOR ALL DIMENSIONS AND CONDITIONS ON THE JOB AND THIS OFFICE MUST BE NOTIFIED OF ANY VARIATION FROM THE DIMENSIONS AND CONDITIONS SHOWN BY THESE DRAWINGS. SHOP DETAILS OF ADEQUATE SCALE MUST BE SUBMITTED TO THIS OFFICE FOR APPROVAL BEFORE PROCEEDING WITH FABRICATION ON ITEMS SO NOTED.

STAMPS:

PROJECT/CLIENT:

PROJECT ADDRESS:

DOLORES ST,
1 SE OF 7TH AVE
CARMEL, CA 93921

APN: 010-145-020
010-145-023

DATE: JANUARY 24, 2022

CLIENT REVIEW

REVISIONS:

1	
2	
3	
4	
5	
6	

RELOCATION
SITE PLAN

SHEET NO.

A1.0