

# How CAPA

## Managed Growth and Activity for over 31 Years!

### *Keeping Peace in the Neighborhood*

**The Carmel Academy of Performing Arts (CAPA)**, originally Carmel Ballet Academy (CBA) was built in 1954 as a dance studio by the late Carmelites, Joanne and Dudley Nix. Over the years, as a commercially zoned space with residential allowances within that zoning, CAPA has diligently focused on keeping the peace in the neighborhood.

Joanne operated CBA until the mid-1980's, when her health declined, and she passed away. Carol Richmond purchased the building in 1989 and began building the business which was to grow over the next thirty-one years. Over those many years, the activity at the studio grew and embraced by the community.

In 1989, one room was available for dance lessons and all other spaces in the building rented, month to month, with long-term tenants. As the need grew, the tenants moved on and we opened another room as a dance space and we opened a store in the building.

From 75 students in 1989, to over 400 weekly students, the Academy grew. In 1993, Richmond founded Dance Kids of Monterey County, a nonprofit organization dedicated to dance and music performance. With casts that grew to 120 actors and dancers for Nutcracker, the business became a 7 day a week enterprise, with classes or rehearsals from 8:00 am to 9:00 pm. Within the August to December rehearsal time frame, and including the registered weekly students, it was not unusual to have 650 students in and out of the front door on a weekly basis.

Corralling 650 students from the ages of 4 and up was not a straightforward job. Volunteer parents helped during rehearsals on the weekends and staff were available during the regular class hours during the week, yet there were many occasions where children were in the neighbors' yards, on the sidewalk, dancing on the front lawn of the Scout House and even climbing on the roof of the Scout House.

Noise, parking and drop off/pick up are issues that have arisen over the years and addressed immediately by the staff and owner, assuring a good neighbor policy.

Noise issues were ongoing with that amount of foot traffic, music, and controlled chaos of hundreds of children, 20 teachers, music and voice lessons, and various styles of dance from ballet to hip hop and jazz.

Complaints from the hotel behind the studio and from the Bell home regarding noise began with the time of the noise. When rehearsals or class were in session, 2:00 pm until 10 pm, we arranged our schedules to stop music by 9:00 pm. When days were warm, we installed fans and did not open the doors on the north side of the building. We also installed heavy duty drapery (theatre weight Duvetyne-a light and sound blocking curtain material) on the north side of the building to be pulled in the evening, to help improve the noise and light issues.

The traffic in front of the studio was a major concern for our neighbors. We worked with our neighbors and reduced the traffic flow between classes by have a pickup system involving the parking lot across the street. The City allowed the parents to park for 10 minutes-hazard lights flashing-to retrieve their student. This stopped parents from honking their horn from 3:00 to 9:00 pm to alert their child they were waiting.

To my knowledge, we only had two complaints from the hotel and from across the street apartments. It was mainly the Bell home, as they were immediately to the north of the building. With each incident, there was a concerted and immediate effort to accommodate each request from the Bell's.

As we transition from children, dance and music, to a business serving the residents and visitors, in what has become a destination location and known as the most pet-friendly community in the world, our past thirty-one years of good neighbor policies is in the forefront of our business model. Our pro-active diligence and respect for the community and neighbors will continue. Our history of managing 650 children in a 7-day week, including hundreds of little mice, bon bons and sugar plum fairies during Nutcracker, included concern for our neighbors. Recognizing, listening and improving on concerns of the residents in a commercial zone will continue to be of importance.

# Sound-Proofing / Sound-Absorbing CAPA

*Keeping Peace in the Neighborhood*

## Processes, Policies and Monitoring

**Carmel Academy of Pampered Animals (CAPA)** understands and values the concerns of our neighbors, both in the residential commercial zone and the commercial zone of 8th and Mission. We take very seriously the need to manage noise so everyone can have Peace in the Neighborhood. Our process for managing Noise or Animal Sounds that potentially may be experienced outside our building has FIVE essential elements.

1. **Policy regarding a No Bark Zone.**
2. **Proper Screening of customers and their dogs.**
3. **Training of Technicians and Handlers**
4. **Sound-Proofing and Sound-Absorption**
5. **Continuous Sound Monitoring and Reporting**

### **Element No 1: A No Bark Zone Policy**

At CAPA, we are implementing a No Bark Policy for all guests and customers. This is a well-known and proven behavioral policy essentially creating a **NO BARK ZONE**. We will adopt the same policy and procedures as the leading doggie daycare of Prunedale, CA , Dogwood Ranch, who adopted the first doggie daycare in the USA's policy, Paradise Ranch Pet Resort, of Sunnyvale, California.

Both of these very large doggie daycares have over 100 dogs attending their program. When you visit their facility you will instantly notice the deafening LACK of noise and barking. It is a **NO BARK ZONE**. To accomplish this, they enforce the following policies through a very effective procedure on a daily basis.

1. **Orientation Video-** CAPA will produce and have online in the registration packet, and orientation video for prospective new customers showing the effectiveness of the NO BARK ZONE and explaining the procedure of enforcement. An active dog is a happy dog and barking can be immediately mitigated. No exceptions. As part of our registration with doggie daycare software, the customer will be fully educated on our policies and procedures and sign all paperwork acknowledging acceptance.

2. **Positive Reinforcement**-effective training techniques includes:

### Correction Level 1

- a. **A Rattle Bottle** - to distract the dog. Used by the constant monitoring of the Technician/Handler.

Link to Rattle Bottle:

<https://www.youtube.com/watch?v=716Smdtc2PA>



### Correction Level 2

- b. **A Lanyard Clip** - Short lanyard with clip that connects to dog collar or harness and keeps dog at the side of the Technician/Handler. This establishes the Technician/Handler as Alpha Dog.

an

### Correction Level 3

- c. **Squirt Bottle** - We will disclose to the potential customers that if we need to escalate to Correction Level 3 a squirt water bottle will be used for correction.



### Correction Level 4:

- d. Removal and isolation to **Quiet Room-** A puppy time-out may be required during any of the above stages.

### Correction Level 5

- e. **Dismissal-** If we have assessed the animal and determined the animal is not socialized or well-suited for a **No Bark Zone Policy**, we will terminate the account..

## **Element No 2: Proper Screening of Dog**

Upon interview with prospective dog and owner, we will screen for any issues with socialization and review our **No Bark Policy**. Our Team Member Trainer, Bob Jury will be responsible for training our Staff to identify “anxious, stressed or non-socialized dogs. In Carmel, we anticipate most dogs are already well socialized as they are in Carmel and walking about the town with no issues that are known.

## **Element No 3: Training of Technicians/Handlers**

No Technician/ Handler will be allowed to monitor or manage the dogs without a full online course in dog handling and doggie daycare as well as in-person evaluation and training by a trained animal behaviorist such as Bob Jury from Coyote Scoop.

## **Element No 4: Sound-Proofing and Sound Absorption of the Studio Space**

We have completed a **Sound Level Meter Survey on May 1, 2021 with I-AMP Pro Audio of Monterey County**. The monitoring completed was on our building “as is” today with amplifications at the highest levels our Dance Studio Audio can produce. The report is attached.

We have also discovered through the Carmel Noise Survey Report that the number one resident sound nuisance complaint in Carmel are tour buses and buses which take the route to the Sunset Center on 8th Avenue and affect our corner. The second residential nuisance complaints are trucks and street sweepers that create decibels beyond allowable ordinance limits, however, necessary.

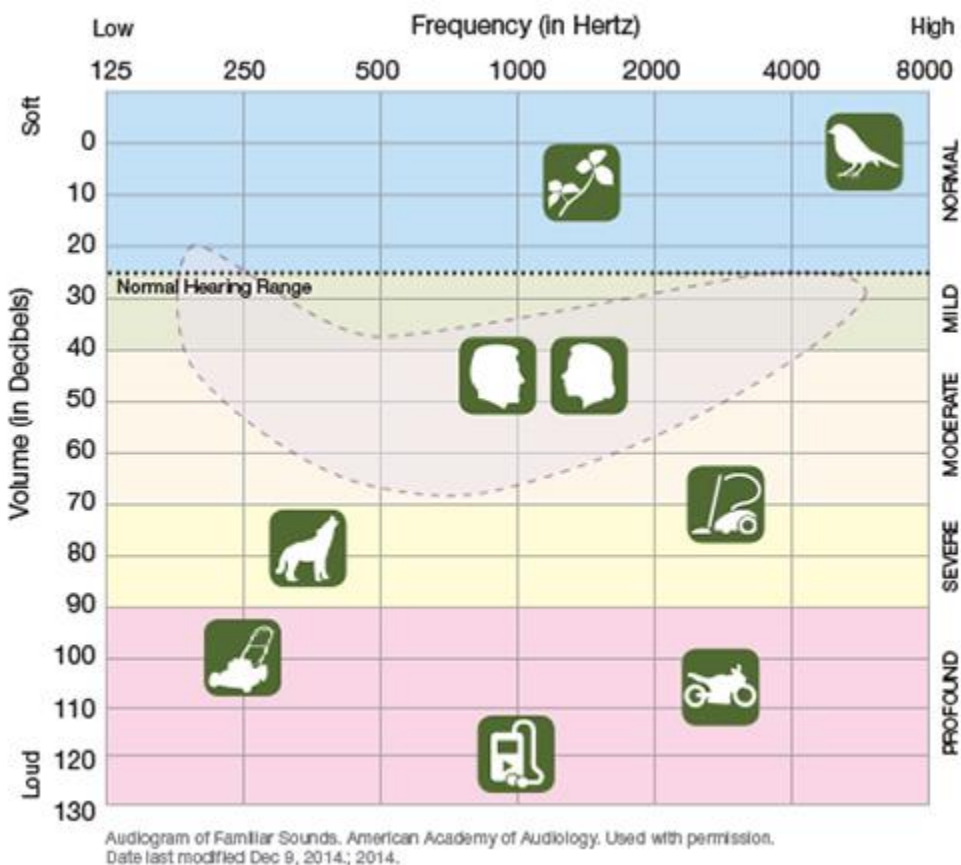
The LEAST annoying Residential sound nuisance (in a residentially-zoned) area are animal noises.

With this monitoring as our baseline, and with the professional sound company that does just this service for many businesses in Monterey County, we have learned that our studio, with an existing insulator from our adobe brick walls, produces decibels of 94 dB with music blasting at the highest sound. We sampled dogs barking at the highest level of amplification (inside the studio with doors closed) and the decibel rating was 89 dB. We are zoned for accepted inside limits between 50 - 70 dB, with exception limits of up to 77.75 dB. Our sound-proofing through SoundProofCow.com, will lower the decibels 27%, as defined by a STC rating computed through proven ASTM standards to be below 66 dB's, which was the monitored sound on May 1, 2021 from general outside noise as per the report.

To address the drop-off of dogs to our commercial building and a potential yip or yap on the way up the stairs, it is our position that this will be no more a sound nuisance as reported in the Carmel Noise Survey and will not be of any issue at all.

We are also providing a history of our building as a dance studio and how the current owner, Carol Richmond and partner of Carmel Academy of Pampered Animals, ameliorated any concerns of the City, residential neighbors and commercial neighbors on our block.

**As an example,** Most humans are born with the ability to hear frequencies from about 20 Hz (low) up to 20,000 Hz (high) but that range shrinks as we get older.



**See Attachments for Soundproof Cow and final recommendations along with an understanding of STC Ratings and Hz sound as it relates to dogs and humans.**

**Information on STC Ratings** - This is specific to the noise dampening or sound-proofing of a room. The product chosen “Quiet Barrier” has a STC rating of 27 - or a reduction of 27%



## I.A.M.P.

INDEPENDENT AUDIO OF THE MONTEREY PENINSULA  
218 Reindollar Avenue, Unit 6A (831) 884-9558  
MARINA, CALIFORNIA 93933  
iamp-pro-audio@comcast.net

This report is delivered to document the results of a noise / sound survey conducted at the building formerly housing the Carmel Academy of Performing Arts at 8th Avenue and Mission Street in Carmel-by-the-Sea , California. The tests were conducted on May 1. 2021 between the hours of 11 am and noon.

The purpose of this survey is to establish a reference for potential sound mitigation and containment measures to be added to the existing structure.

An amplified music system with loudspeakers was used to develop a level of 94 dba-spl peaks in studio A of the building. The program material was rock music and, alternately, recorded tracks of dogs barking. Subsequent measurements were taken at the various locations listed and averaged here;

Studio B        54 dba

Lobby            78 dba

Outside front door    62 dba

Side door        74 dba

Sidewalk on mission street    52 dba

Passing traffic on mission street reached levels of up to 66 dba (vehicle type dependent) and the ambient sound level with no passing traffic was approximately 49 dba , influenced by various normal street sounds such as bird-song, car doors closing, pedestrian activity, etc.

It is apparent that most of the sound escapes from the building via ;

- 1) The side door; air gaps, frame seal, possibly material
- 2) All single pane glass windows on sides, front , and lobby of building
- 3) Door materials and seals between rooms and outside.

It is worth noting that the outside walls of the building are adobe brick and are very effective in containing sound inside the structure.

I can make myself available for questions regarding this survey

Sincerely

Anthony Nocita  
Owner IAMP PRO AUDIO

## **Sound-Proofing and Sound Absorbing**

We will be constructing and installing a 3-layer system to reduce our decibels over 27% or within commercially zoned acceptable decibel limits (INSIDE our building). Sound dissipates with distance, so the decibels will be even lower outside and below potentially 40 decibels. See I-AMP Audio Report for various location readings.

**Layer 1:** Seal Windows and Doors - Windows to have ¾” plywood with window sealant.

**Layer 2:** Vinyl Sound-Proofing Material (Data Sheet included) “**Quiet Barrier**” - This product provides the technical specifications to determine sound-proofing to lower decibels through an ASTM test to obtain a STC rating.

**Layer 3:** Fiberglass FR-Rated Sound-Absorbing Panels fit to window size. This will eliminate reverberation and echo within the facility.

**Please note:** The building has an existing natural sound-barrier with walls made of Adobe Brick and as noted on I-AMP Sound Survey.

## **Other websites for reference:**

### **STC Class Ratings**

<https://www.acousticalsurfaces.com/blog/acoustics-education/sound-transmission-class-stc-rating/>

### **Hud Sound Transmission Guidance**

[https://www.hud.gov/sites/documents/DOC\\_16419.PDF](https://www.hud.gov/sites/documents/DOC_16419.PDF)

### **Sound Proofing - STC**

[https://www.soundproofingcompany.com/soundproofing\\_101/understanding-stc-and-stc-ratings](https://www.soundproofingcompany.com/soundproofing_101/understanding-stc-and-stc-ratings)



## **American Micro Industries, Inc.**

### **PRODUCT DATA SHEET: ECONO BARRIER™**

#### **DESCRIPTION:**

ECONO BARRIER™ is a flexible, high density material with a smooth surface designed to reduce noise transmission between two spaces. ECONO BARRIER™ is available with a pressure sensitive adhesive (PSA) for an easy 'peel and stick' application.

#### **APPLICATIONS:**

ECONO BARRIER™ is an economical approach to reduce the transmission of noise through walls, ceilings, and floors. This product can be applied directly to the backside of drywall or attached to the studs/joists prior to the application of drywall. Because ECONO BARRIER™ is not UV resistant, it should be shielded from exposure to sunlight. Applications include, but are not limited to; common walls, ceilings and floors between condo units, walls between office spaces and manufacturing areas, multi media rooms, industrial facilities, and machine enclosures (i.e. compressors, pumps, air conditioning units, etc.).

#### **PRODUCT AVAILABILITY:**

- 4 x 8 ft. sheets (Part #: MLVB14X8)
- 4 x 8 ft. sheets with PSA (Part #: MLVB14X8PSA)
- 4.5 x 20 ft. roll (Part #: MLVB120)
- 4.5 x 30 ft. roll (Part #: MLVB130)

#### **TECHNICAL DATA:**

##### **PROPERTIES**

Physical Property	Value	Test Standard
Color	Black	n/a
Thickness	Approx. 0.125" (1/8)	n/a
Surface Mass	1.0 lbs/ft²	n/a
Density	96 lbs/ft³	n/a
Elongation	120%	ASTM D-412
Tensile Strength	407 PSI	ASTM D-412
Tear Strength	77 lbs/ 1"	ASTM D-624
Temperature Range	-40°F to 255°F	n/a
Hardness	90 Durometer, Shore A2	ASTM D-2240
Specific Gravity	1.80	ASTM D-798
Stiffness	19.60 mega pascal	ASTM 749
Flammability	Meets	UL 94 HF-1
	Meets	MVSS 302

##### **SOUND TRANSMISSION LOSS**

Freq. Hz	125	250	500	1000	2000	4000	STC
(dB)	14	14	23	29	34	37	27

## **American Micro Industries, Inc.**

440 Ramsey Avenue, Chambersburg, PA 17201

Phone: 800-558-2058 Fax: 717-261-9161

e-mail: [sales@americanmicroinc.com](mailto:sales@americanmicroinc.com)

<http://www.soundprooffoam.com>

ECONO BARRIER™

#### ADHESIVE (PSA)

Physical Property	Value	Test Standard
Material	Acrylic	n/a
Thickness	0.003"	n/a

The information contained herein is typical and based upon the results of controlled laboratory tests. The information is accurate to the best of American Micro Industries, Inc.'s knowledge. Product performance may vary based on the particular application and installation techniques utilized.

#### **American Micro Industries, Inc.**

440 Ramsey Avenue, Chambersburg, PA 17201

Phone: 800-558-2058 Fax: 717-261-9161

e-mail: [sales@americanmicroinc.com](mailto:sales@americanmicroinc.com)

<http://www.soundprooffoam.com>



Kellie Quinn-Hoffmeister <kelliehoff@gmail.com>

---

## Fwd: survey results

---

**Kellie Hoffmeister** <lolasposhpetspa@gmail.com>  
To: kelliehoff@gmail.com

Mon, May 3, 2021 at 4:04 PM

----- Forwarded message -----

From: **Kellie Hoffmeister** <lolasposhpetspa@gmail.com>  
Date: Mon, May 3, 2021 at 1:12 PM  
Subject: Fwd: survey results  
To: <foh4k@att.net>

----- Forwarded message --foh-----

From: **Ryan Yaukey** <RYaukey@soundproofcow.com>  
Date: Mon, May 3, 2021 at 1:12 PM  
Subject: RE: survey results  
To: Kellie Hoffmeister <lolasposhpetspa@gmail.com>

Kellie

Attached is the Md barrier tech sheet, I recommend for going over the plywood prior to acoustical paneling.

Thanks

Ryan



**Ryan Yaukey**

Senior Account Manager

440 Ramsey Ave

Chambersburg, PA 17201

# Standard Soft Sound® Acoustic Panel with Aluminum Frame

## Features & Benefits:

- **Superior Acoustic Performance** - Soft Sound® Acoustic Panels are our premium sound absorption product that can be used anywhere reverberation (echo) is an issue. Our acoustic panels will improve speech intelligibility, improve production and improve any listening or recording environment.
- **Exceptional Quality** - Soft Sound® Acoustic Panels are a highly finished professional product. Soft Sound® Acoustic Panels are meticulously hand-made by experienced craftsmen that take pride in the product they build.
- **Fabric Covering Variety** - Soft Sound® Acoustic Panels are available with an endless variety of fabric options. Choose the fabric color and texture that best matches your existing décor. If desired, we will match your fabric of choice.



## General Information:

This Soft Sound® Acoustic Panel has an internal aluminum frame for extra edge protection in high traffic areas. Excellent acoustic performance combines with a multitude of finishes, sizes and configurations for limitless design potential. Soft Sound® Acoustic Panels improve the acoustics within a room by minimizing reverberation (echo) within the low, middle and high frequencies. All Soft Sound® Acoustic Panels have a flammability rating of Class A and will pass most building code requirements for exposed materials.

## Applications:

Auditoriums • Broadcast Studios • Classrooms and Educational Buildings • Commercial Recording Studios • Commercial Theaters  
Computer and Equipment Rooms • Conference Rooms • Gymnasiums • Home Recording Studios • Home Theaters • Homes • Music  
Halls • Offices • Restaurants

## Acoustic Data:

thickness	covering	density	125	250	500	1K	2K	4K	NRC*
1 inch	fabric	6 lbs	.14	.27	.74	1.01	1.10	1.30	0.80
1 inch	vinyl	6 lbs	.22	.36	.82	1.11	.98	.86	0.80
2 inch	fabric	6 lbs	.51	.96	.98	1.01	.95	.98	1.00
2 inch	vinyl	7 lbs	.21	.85	1.01	1.07	.91	.90	1.00

\* NRC = noise reduction coefficient

*continued on back of page*

### ADDRESS

Soundproofcow  
440 Ramsey Avenue  
Chambersburg, PA 17201

### PHONE

P: 1-866-9499-COW  
F: (717) 261-1790

### WEB

[www.soundproofcow.com](http://www.soundproofcow.com)



### Product Availability:

Soft Sound® Acoustic Panels are available in 1 and 2 inch thicknesses. For thickness dimension, please allow a 1/8 inch tolerance. Acoustic Panel outside dimensions can be up to 4 ft wide and 10 ft in height. For outside dimensions, please allow a 1/4 inch tolerance. We can construct oversized panels with larger outside dimensions, however drawings with exact specifications are needed. Please contact our Acoustic Consultants for more information about oversized Acoustic Panels.

#### Acoustic Core:

- 6-7 lbs Fiberglass

#### Edge Type:

- Fabric wrapped, internal aluminum frame

#### Edge Detail Options:

- Square
- Bevel
- Radius

#### Corner Detail Options:

- Square

### Fabric Options:

Soft Sound® Acoustic Panels are available in fabric and perforated vinyl coverings. An endless variety of colors, textures and patterns can be used to create a highly customized, unique space. Fabrics are typically used to improve or maintain the aesthetics of a space. If you have a fabric already picked out, we will mount it on our acoustic panels. Perforated vinyl is generally used for applications that require easy clean-up. To members of the specifying community that wish to receive a listing of all available covering materials, please contact our Acoustic Consultants.

Illustrated below are a few of our most popular fabric collections. All of the fabric options listed are made with 100% recycled polyester fibers and may be cleaned with mild, water-based cleaning agents.

- **FR701** - Classic woven style in subtle texture offers timeless appeal. Understated earth tones provide a perfect background for bolder accents.
- **Anchorage** - A classic crepe style is brought to life with today's updated colors. Soft texture and a wide variety of rich, bold hues makes this collection perfect as a foundation or accent.
- **Carrara** - Subtle pattern, inspired by the natural look of marble, weaves contrasting interplays of luster and matte.
- **Network** - A vibrant network of intersecting strokes describes this collection of fabrics.

### Mounting Options:

- **Adhesive** - Adhesive mounting is ideally suited for permanent applications requiring speed and ease of installation.
- **Z-clip** - Z clip mounting is ideal for applications where frequent panel removal & re-hanging is required.
- **Hook and Loop** - Hook and loop mounting is suggested for temporary applications where panels may be removed and relocated for future use.

#### ADDRESS

Soundproofcow  
440 Ramsey Avenue  
Chambersburg, PA 17201

#### PHONE

P: 1-866-9499-COW  
F: (717) 261-1790

#### WEB

[www.soundproofcow.com](http://www.soundproofcow.com)



o: 717.262.7238

f: 717.261.1790

[ryaukey@soundproofcow.com](mailto:ryaukey@soundproofcow.com)

-

## Leave a Review!



### WANNA GIVE TO A GOOD CAUSE?

Help the Cow buy a cow. Just "Like" us on Facebook!

Every 500 "Likes" equals 1 cow for an impoverished family.

---

**From:** Kellie Hoffmeister <[lolasposhpetspa@gmail.com](mailto:lolasposhpetspa@gmail.com)>

**Sent:** Monday, May 3, 2021 3:55 PM

**To:** Ryan Yaukey <[RYaukey@soundproofcow.com](mailto:RYaukey@soundproofcow.com)>

**Subject:** Re: survey results

**CAUTION:** This email originated from outside of the organization. Do not click links or open attachments unless you recognize the sender and know the content is safe.

Hi, I just left you a voicemail. I need more detail on this.

Kellie

On Mon, May 3, 2021 at 10:10 AM Ryan Yaukey <[RYaukey@soundproofcow.com](mailto:RYaukey@soundproofcow.com)> wrote:

Kellie

The panels we are proposing to use in the window cavities and on the door attached, this will show the frequency levels at which these panels absorb sound.

The plywood will also add mass to prevent sound from leaking as long as the materials are completely sealed in these cavities.

Example in attached document: 1in 6pcf panels will absorb .05 % in the 125 hz 24% 250hz 69% in 500 hz 88% 1000hz with an average absorption range of 65%

Let me know if this is the information you are requesting

Thanks

Ryan



**Ryan Yaukey**

Senior Account Manager

440 Ramsey Ave

Chambersburg, PA 17201

o: 717.262.7238

f: 717.261.1790

[ryaukey@soundproofcow.com](mailto:ryaukey@soundproofcow.com)

**Leave a Review!**





### WANNA GIVE TO A GOOD CAUSE?

Help the Cow buy a cow. Just "Like" us on Facebook!

Every 500 "Likes" equals 1 cow for an impoverished family.

---

**From:** Kellie Hoffmeister <[lolasposhpetspa@gmail.com](mailto:lolasposhpetspa@gmail.com)>

**Sent:** Monday, May 3, 2021 12:33 PM

**To:** Ryan Yaukey <[RYaukey@soundproofcow.com](mailto:RYaukey@soundproofcow.com)>

**Subject:** Fwd: survey results

**CAUTION:** This email originated from outside of the organization. Do not click links or open attachments unless you recognize the sender and know the content is safe.

Hi Ryan,

I contracted for a sound level metering at the facility as it stands right now without your materials. Today, I must include this along with your confirming product recommendations and estimated sound absorption db reductions utilizing your material to the planning commission.

We are going to fill the windows with 3/4" Plywood - Window seal and add your panels. Per your recommendations.

We are only concerned with Studio A and B - The windows and doors.

Pictures are attached along with survey.

The Acceptable Noise for our zone is 50 - 70 BB with a second tier with approval up to 77.75 db. Based on the survey and metering, with your materials it looks like we will be well within acceptable limits and lower.

The survey talks about "At the door" this is studio A door - with the Pink Residential (In a commercial zone) being approximately 22 feet away. I am hoping your analysis (which I will give to the city) with this report will put to rest any sound issues coming from our building.

Let me know if you can assist me today on this.

Thank you

Kellie

262-271-4830



----- Forwarded message -----

From: **Kellie Quinn-Hoffmeister** <[kelliehoff@gmail.com](mailto:kelliehoff@gmail.com)>  
Date: Mon, May 3, 2021 at 9:27 AM  
Subject: Fwd: survey results  
To: <[lolasposhpetspa@gmail.com](mailto:lolasposhpetspa@gmail.com)>

----- Forwarded message -----

From: **Kellie Quinn-Hoffmeister** <[kelliehoff@gmail.com](mailto:kelliehoff@gmail.com)>  
Date: Mon, May 3, 2021 at 9:25 AM  
Subject: Fwd: survey results  
To: <[lolasposhpetspa@gmail.com](mailto:lolasposhpetspa@gmail.com)>

--

**Kindest Regards,**

Kellie Quinn-Hoffmeister

**Mobile:** 262-271-4830

**Alternate Emails:** [Kellie@RenewableMR.com](mailto:Kellie@RenewableMR.com) | [Kellie@Esafetystore.com](mailto:Kellie@Esafetystore.com)



**Quiet-Barrier\_MD.pdf**

29K

## Element No 5: Continuous Sound Monitoring and Reporting

In addition to having the above in place on day one, we will be contracting with a online company called **RoomMonitor.com** - Used by Air BnB and other rental/ landlord companies, this online, cloud-based program provides Real Time Noise Control for Short Term Rentals, however, for our application it is ideal for **Continuous Sound Monitoring and Reporting of a doggie daycare. A monitor will be installed in every room as shown below in Pic. A.**

We will be alerted on our mobile device, or webpage of any noise parameters violated within our facility. Reports will be generated and reporting can be cross-matched to the days dog activity and capacity for immediate evaluation and adjustments. Adjustments can be in the way of reducing capacity, Team Mentoring and additional Training and Customer Wag and Wiggle Report Cards with Positive feedback as to how their dog can continue to be in the care of Carmel Academy of Pampered Animals.

**All Socialized Dogs Welcome, but remember, We are a strict No Bark Zone!**

## Realtime noise control

for Short Term Rentals

**Roomonitor Noise Alarm** is a device that allows you to be aware of the noise levels in your short term rentals all day, every day, thus avoiding any problems with neighbors or other tenants.

## Reduce noise complaints

From the first moment you install your NoiseAlarm, the relationship with your neighbours will improve. From then on you will find out in real time about any noise problem in the apartment and you can act accordingly.

**Most of the neighbours complaints are due to noise made by the guest.**

Pic. A - In room monitor.



You'll never miss a noise issue

Roomonitor measurement system uses algorithms to analyze the patterns of noise, in this way there is no need to record the audio in the apartment and the privacy of your guests will be totally safe.

When a noise violation is detected you will be notified in real-time with a Phone Call and an SMS.

BUY NOW



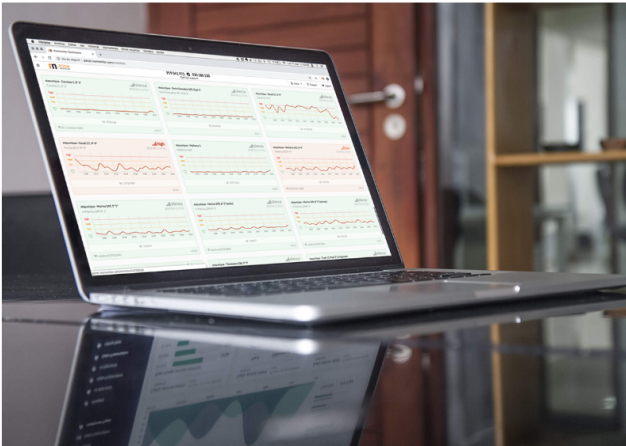
Mobile Access and Alerts

Online Reporting

What Is Noise Monitoring and Why Do I Need It?

By Roomonitor, January 22, 2021 | property management

Feature Set



Alarm

Receive SMS and phone calls when an alarm is triggered and take action on time to avoid neighbours complains.



PrivacySafe

The sensor does not record any audio, in this way the privacy of your guest is totally protect.



24/7 Real-time

Monitor in real time the sound pressure in your apartment and receive daily reports.



Dashboard

Powerfull system to control everything, no matter if you are using a laptop or another device.



Daily Report

Receive daily reports by mail, so you can check how was the last day in a glance.



Customize it

Our system has several sensibilities that you can choose to adapt it to your necessities.