

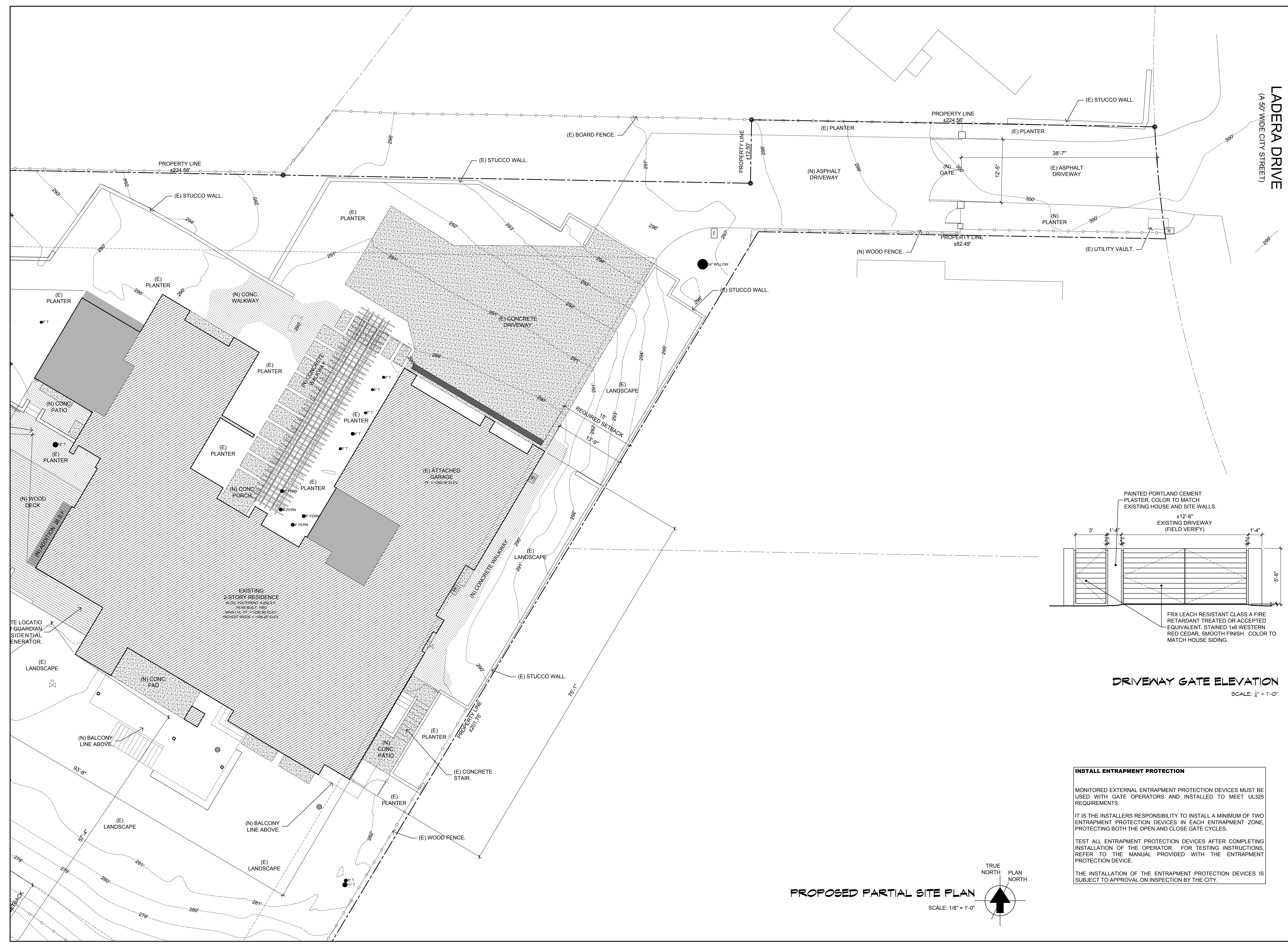
HOLDREN + LIETZKE ARCHITECTURE
 225 CANNERY ROW - SUITE A
 MONTEREY, CA 93940
 Ph: 831.649.6001
 Fax: 831.649.6003
 www.hl-arc.com

DATE: 10/20/2020
 SCALE: 1/8"=1'-0"
 DRAWN: A.P.
 JOB NUMBER: 19.17
 REVISION:

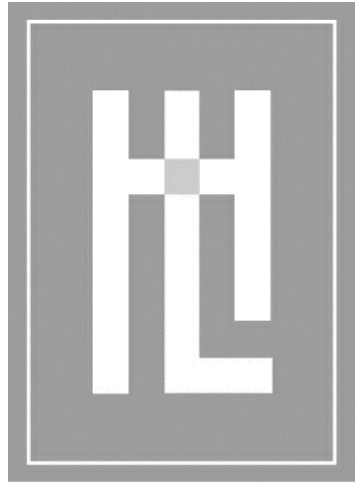


NEW PARTIAL SITE PLAN & DRIVEWAY GATE ELEVATION
LEATHERBERRY RESIDENCE
 26162 LADERA DR.
 CARMEL, CA. 93923
 A.P.N. 009-331-019

A1.6



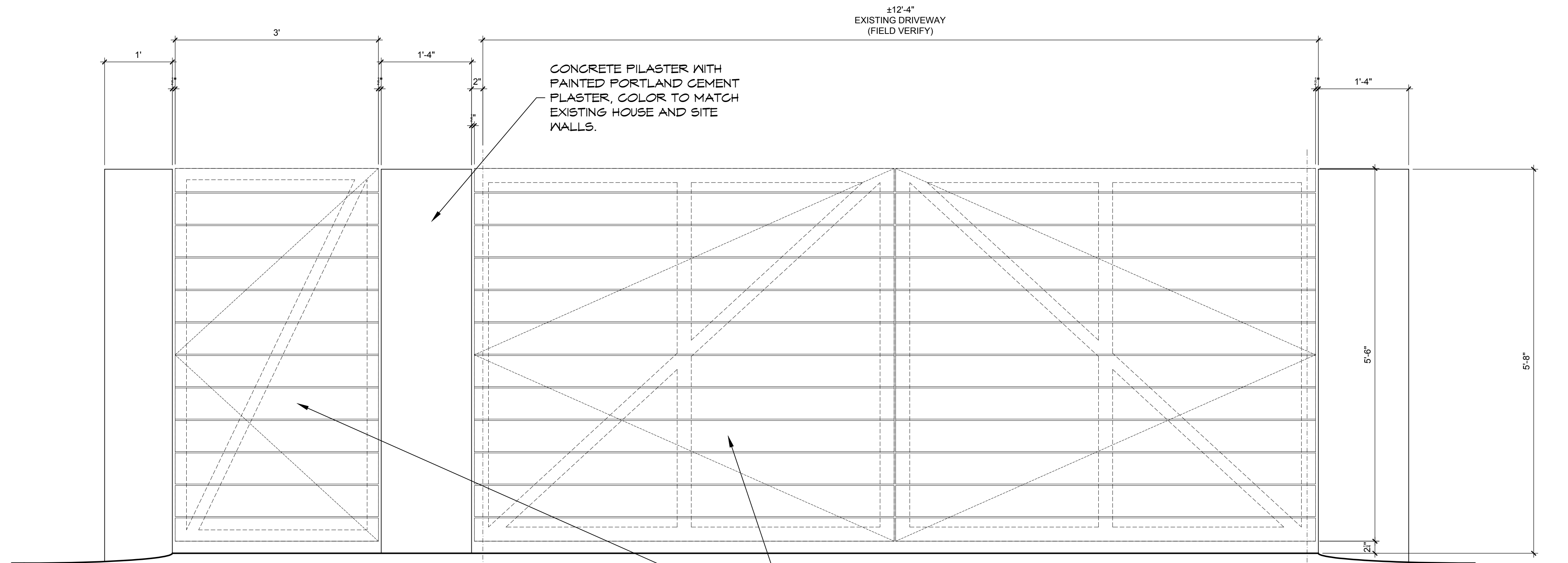
\\HLASERVER2020\HLA Drawing Folders\2019 Jobs\19.17 Leatherberry\RFI\SDWG's\1917-A16 proposed site gate.dwg, 10/23/2020 8:57:41 AM



HOLDREN + LIETZKE
ARCHITECTURE

225 CANNERY ROW - SUITE A
MONTEREY, CA 93940
Ph: 831.649.6001
Fax: 831.649.6003
www.hl-arc.com

DATE:	10/20/2020
SCALE:	1"=1'-0"
DRAWN:	A.P.
JOB NUMBER:	19.17
REVISION	



DRIVEWAY GATE ELEVATION ①
SCALE: 1" = 1'-0"

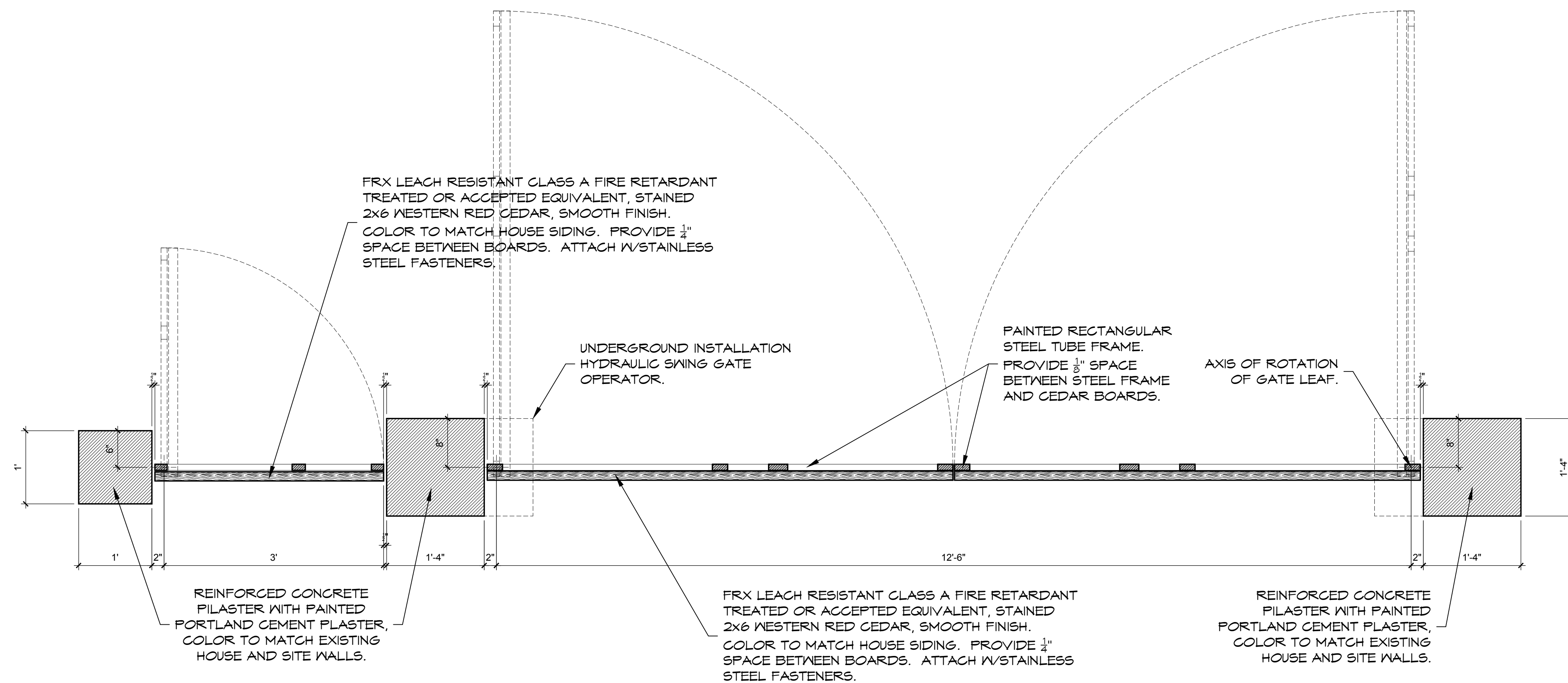
INSTALL ENTRAPMENT PROTECTION

MONITORED EXTERNAL ENTRAPMENT PROTECTION DEVICES MUST BE USED WITH GATE OPERATORS AND INSTALLED TO MEET UL325 REQUIREMENTS.

IT IS THE INSTALLERS RESPONSIBILITY TO INSTALL A MINIMUM OF TWO ENTRAPMENT PROTECTION DEVICES IN EACH ENTRAPMENT ZONE, PROTECTING BOTH THE OPEN AND CLOSE GATE CYCLES.

TEST ALL ENTRAPMENT PROTECTION DEVICES AFTER COMPLETING INSTALLATION OF THE OPERATOR. FOR TESTING INSTRUCTIONS, REFER TO THE MANUAL PROVIDED WITH THE ENTRAPMENT PROTECTION DEVICE.

THE INSTALLATION OF THE ENTRAPMENT PROTECTION DEVICES IS SUBJECT TO APPROVAL ON INSPECTION BY THE CITY.



DRIVEWAY GATE PLAN ②
SCALE: 1" = 1'-0"



PROPERTY GATE DETAILS

LEATHERBERRY RESIDENCE
26162 LADERA DR.
CARMEL CA. 93923
A.P.N. 009-331-019

A8.4