

**CITY OF CARMEL-BY-THE-SEA
POLICY AND PROCEDURE**

Subject: Permit process for residential
reroofs.

Policy/Procedure No: 2025-XX

Effective Date: T B D

Authority: Resolution No. xx-xxx

Purpose:

To clarify the review process for reroofs and specify when approval can be made at the staff level (i.e. administratively) and when approval warrants a referral to the Planning Commission.

Policy/Procedure:

As fully set forth in the policy document, attached.

Responsible Party:

City Administrator

Department of Origin:

Community Planning and Building

Revision Dates:

Rescinded Date:

City of Carmel-by-the-Sea

POLICY FOR THE PERMIT PROCESS FOR RESIDENTIAL REROOFS CITYWIDE

Statement of Purpose:

To clarify the review process for reroofs and specify when approval can be made at the staff level (i.e. administratively) and when approval warrants a referral to the Planning Commission.

Policy:

The approval authority for residential reroofs shall be as follows:

<i>Reroofing Permit Process: Single-Family Resid. Buildings Like for like reroofs</i>	
<i>Wood to wood</i>	<i>Track 1 Design Study</i>
<i>Slate to slate</i> <i>Tile to tile</i> <i>Tar & Gravel to Tar & Gravel</i> <i>And other natural materials</i>	<i>Track 1 Design Study</i>
<i>Comp to comp (**earth tones)</i>	<i>Track 1 Design Study</i>
<i>Reroofs with change in material</i>	
<i>New Materials: Slate, Tile (clay, ceramic, and concrete), Tar & Gravel and other natural materials</i>	<i>Track 1 Design Study</i>
<i>Vertical Standing Seam Metal Roof (**non-earth tones)</i>	<i>Design Study Track 1 with Planning Commission referral required</i>
<i>Vertical Standing Seam Metal Roof (earth tones)</i>	<i>Design Study Track 1</i>
<i>Metal Tiles</i>	<i>Design Study Track 1</i>
<i>Tar and gravel to TPO or similar (on single story flat roof)</i>	<i>Design Study Track 1</i>
<i>Wood to comp (**earth tones)</i>	<i>Design Study Track 1</i>
<i>Wood to comp (**non-earth tones)</i>	<i>Design Study Track 1 with Planning Commission referral required</i>
<i>Synthetic Products</i>	<i>Design Study Track 1</i> <i>*See list of acceptable synthetic materials below</i>

****Acceptable Synthetic Alternatives***

CeDUR shakes

DaVinci shake or slates

EcoStar shake or slates

*****Earth tones shown in figure 1 below***

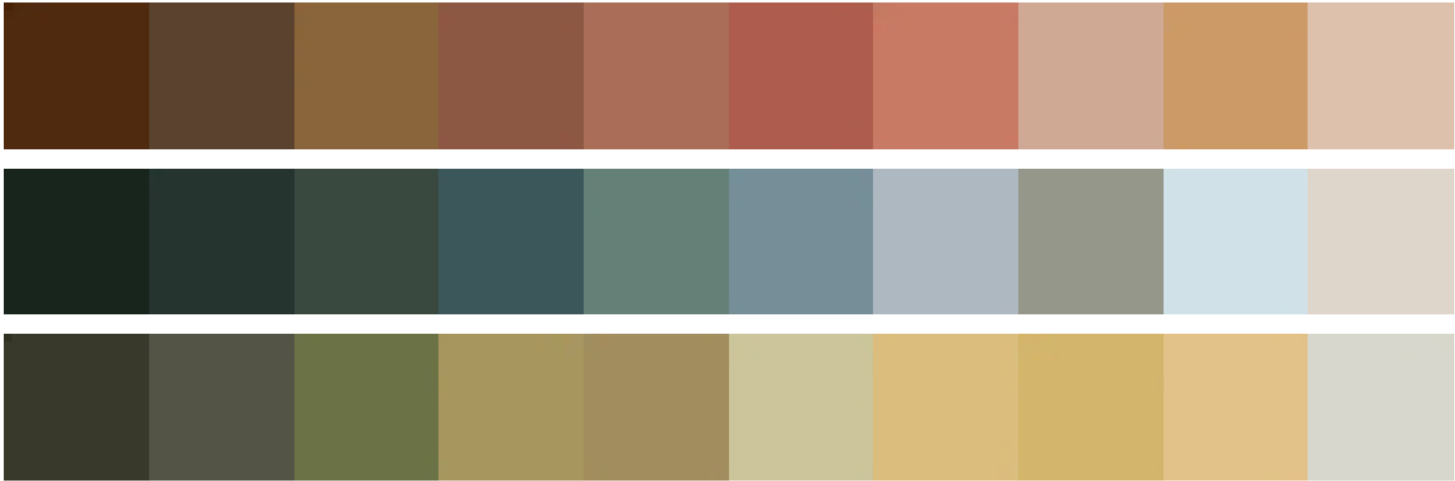


Figure 1