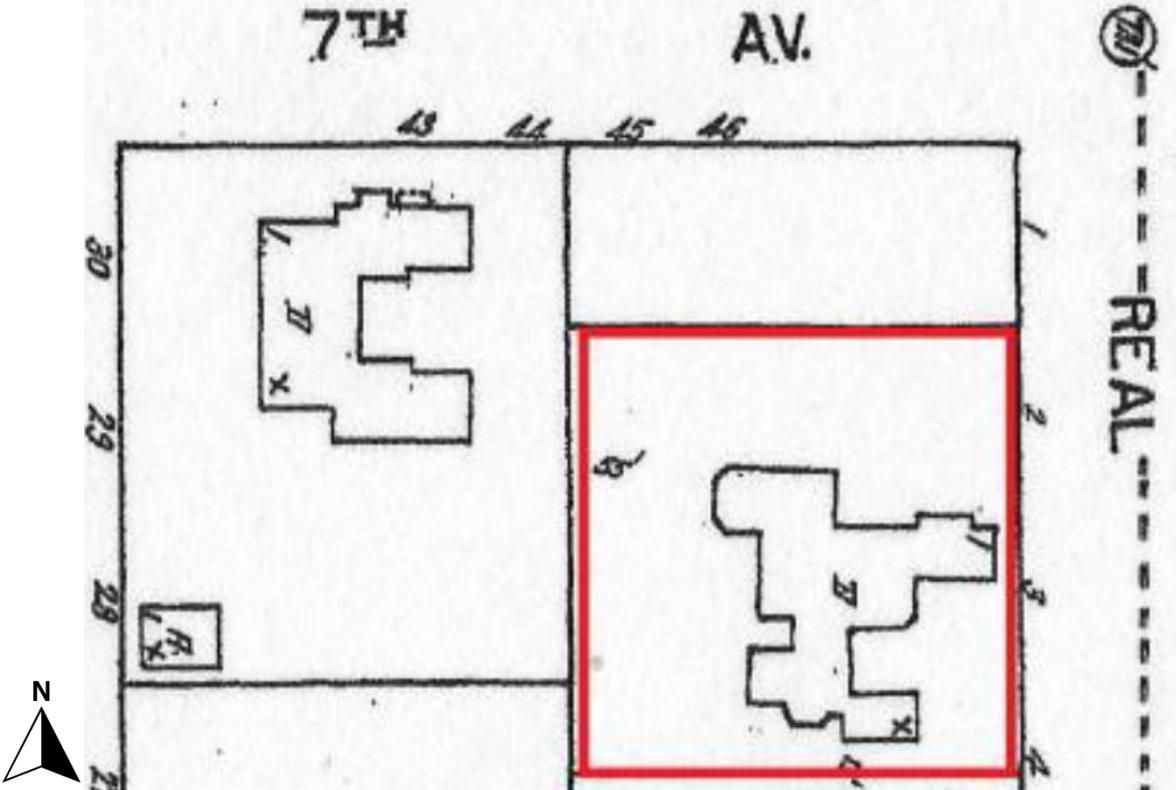


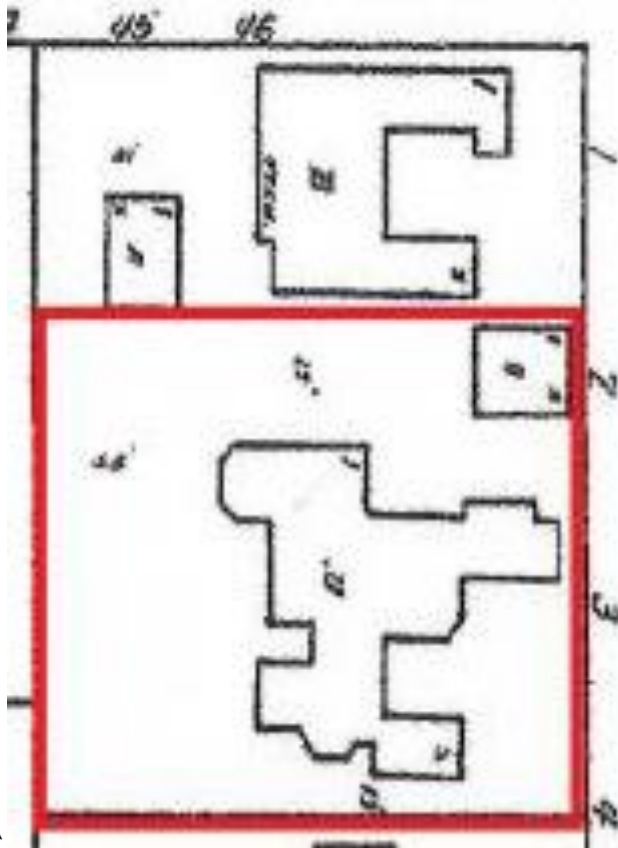


Google aerial, 2024, with approximate property boundary outlined.



1924 Sanborn map showing the house, constructed in 1921.

7TH AV.



1930 Sanborn map. Note detached garage (1927) now shown. No changes to house footprint from 1924 map.



View from Camino Real, looking southwest. Residence (1921) at image left, detached double-door garage (1927) at right.



Subject property, looking west from front yard at the U-plan front courtyard.



Front wing, looking northwest. Detached garage in background, image right.



Bay window and front wing, looking northwest.



Three doors leading onto the front u-plan courtyard.



Exterior brick chimney within the front u-plan courtyard.



View of the south front wing, looking southwest.



North side elevation, looking southeast.



North side elevation, looking south. Arrow indicates non-original window (narrower sill, no extended lintel)



Exterior brick chimney at north side elevation. View looking south.



Rear (west) elevation, looking northeast.



Rear (west) elevation, looking north/northeast.



Rear (west) elevation, looking east at sunroom.



Rear (west) elevation, looking east at bay.



South side elevation, looking west



Detail view of extended sill and lintel, typical throughout.



Detail view of exposed notched rafters in the eaves, typical throughout.



Detail of the "awning light" (left) with screen behind.



Detached garage, looking west (1927).



Carmel stone work in north side yard.



Carmel stone walkway and column in back yard.



Detail photo of Carmel stone and brick walkway and garden wall in front yard.