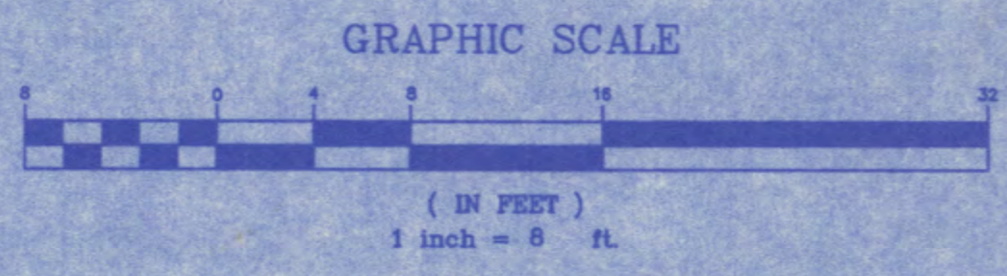
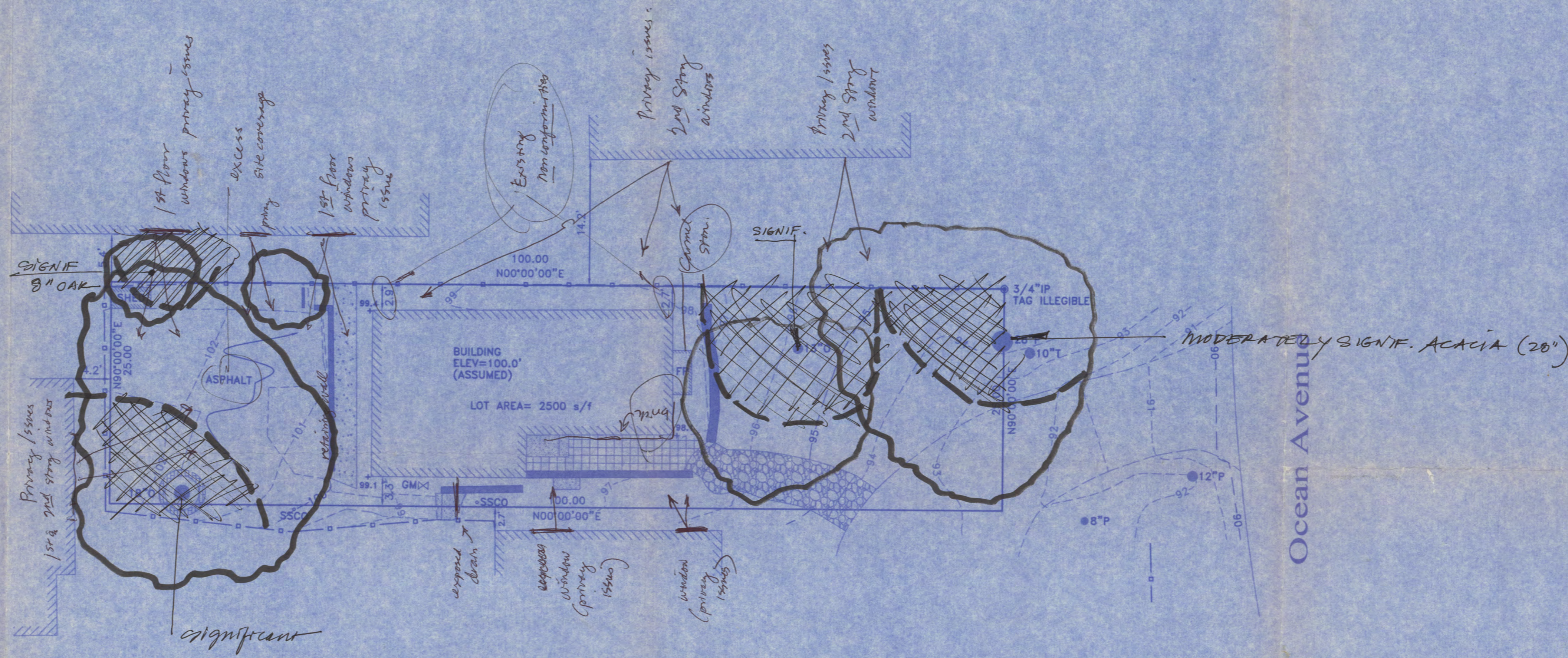


MAY 29 2002



CONSTRUCTION STAKING  
LAND DEVELOPMENT

TOPOGRAPHIC SURVEYS  
ALTA SURVEYS

MS  
MID  
M. DOOLITTLE  
L.S. 6332

REVISION:  
SCALE: 1/8" = 1'  
DATE: 05-20-02

831-373-3293 PH.  
201 HOFFMAN AVENUE, SUITE 3  
MONTEREY, CALIFORNIA 93940  
FAX 831-373-3294

SITE PLAN  
APN 010-033-011  
4 N/E Guadalupe St./ Ocean Ave., Carmel, Ca.  
prepared for:  
Robert Edgren

SHEET 1  
OF  
1 SHEETS

PRELIM. SITE ASSESS.  
MIKE BRANSON  
ELA WIE HANSEN 6/12/02