



# GIS MAP - Carmel-by-the-Sea - Underground Utility District 1



- City Limit
- Parcels
- County Parcels

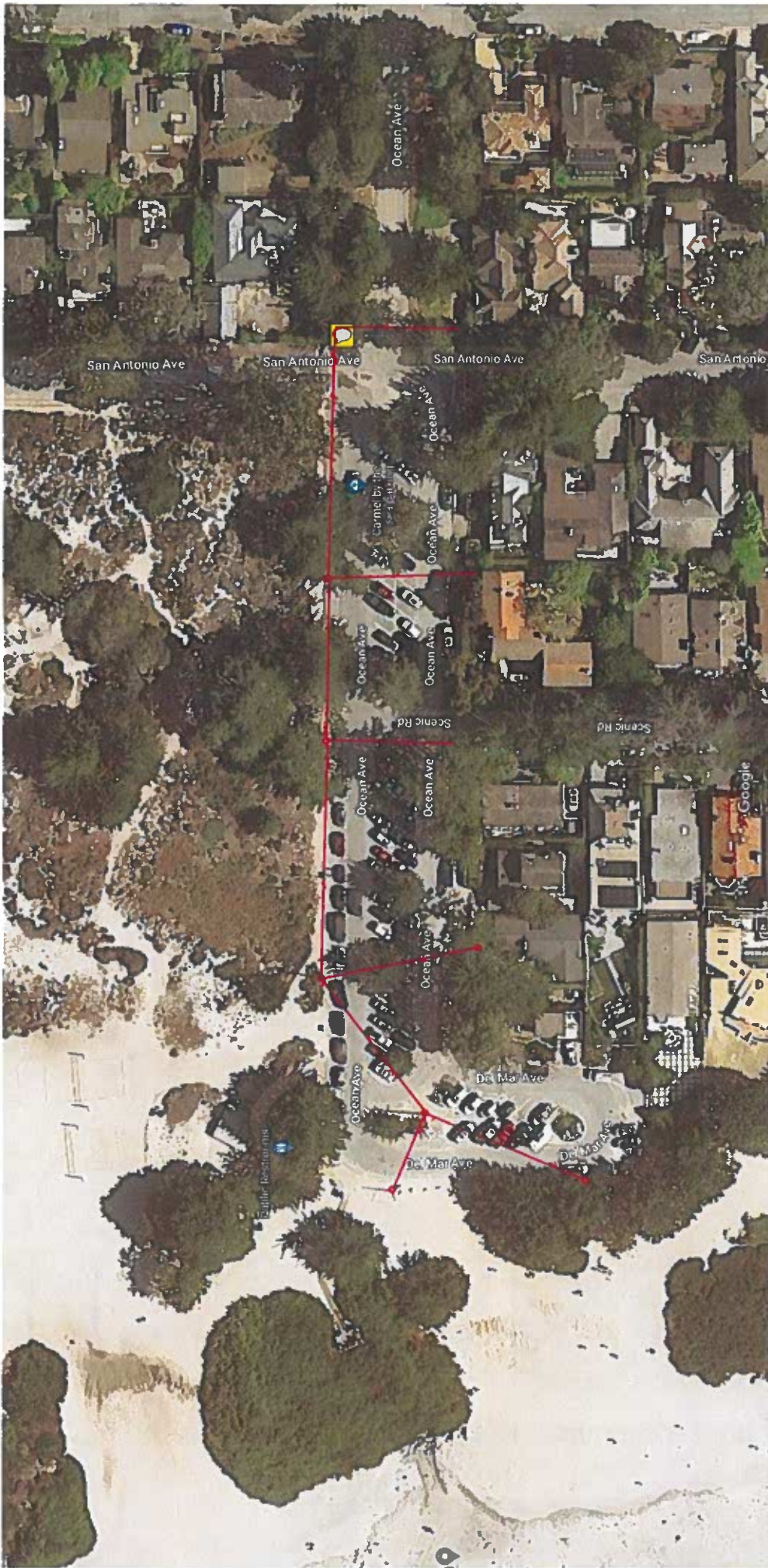


**Underground Utility District 1**  
 Located on the west side of Ocean Ave from San Antonio Ave west approximately 800' to the end of the parking lot at the Del Mar Beach Entrance.

**EXHIBIT 1**  
**PAGE 1 OF 2**

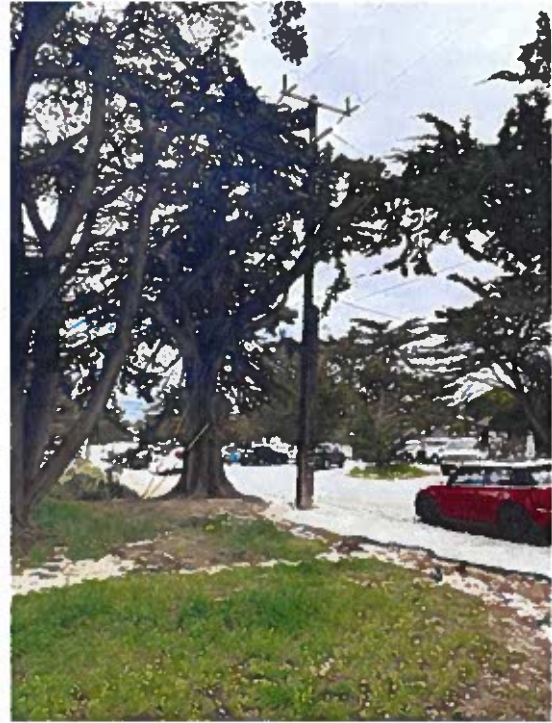






Imagery ©2023 AMBAG, Maxar Technologies, Map data ©2023 56 ft

**+/- 8 Poles**  
**+/- 800 LF**



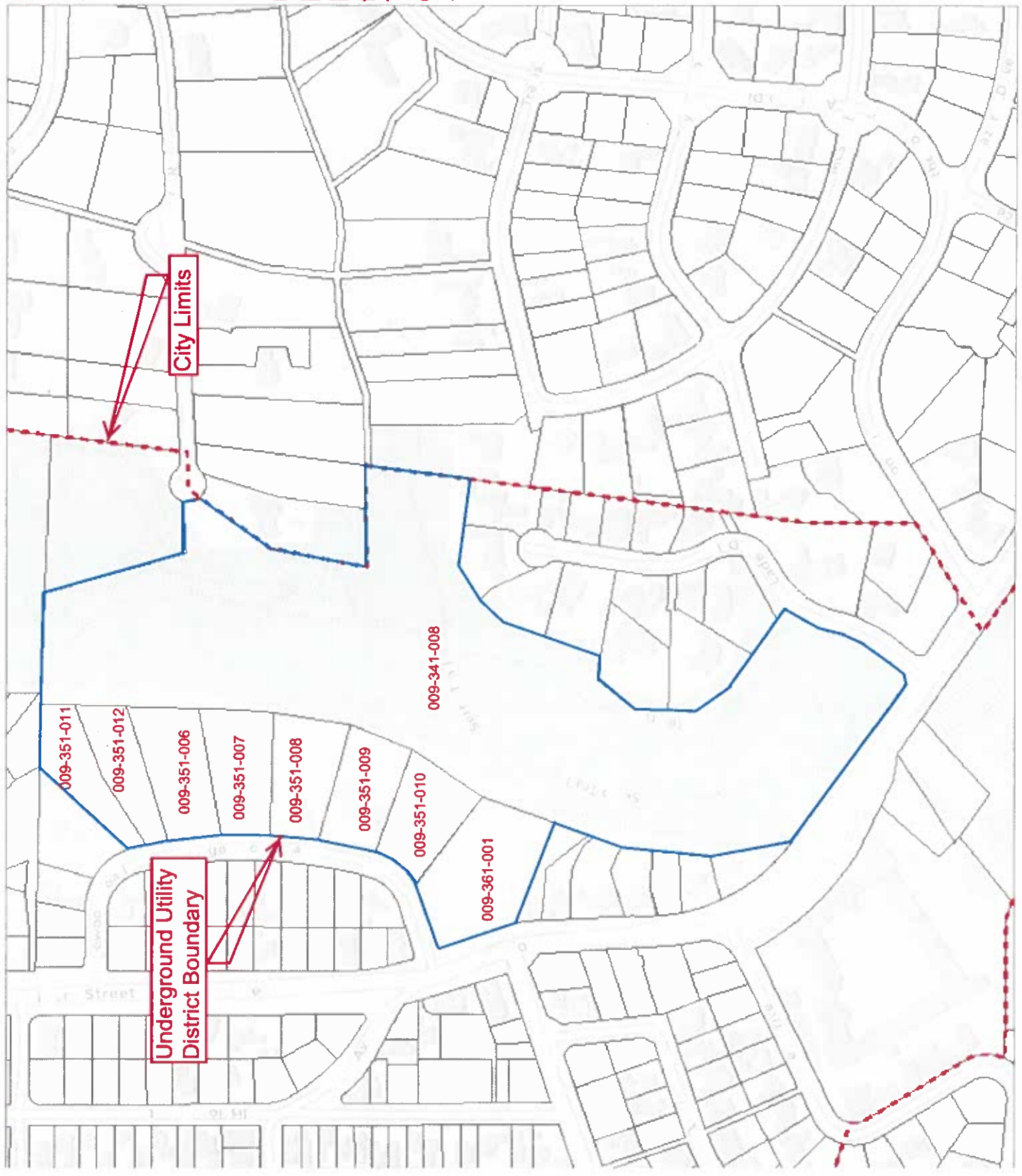
Potential undergrounding from San Antonio west to end of Ocean



# GIS MAP - Carmel-by-the-Sea - Underground Utility District 2



- City Limit
- Parcels
- County Parcels



**Underground Utility District Boundary**

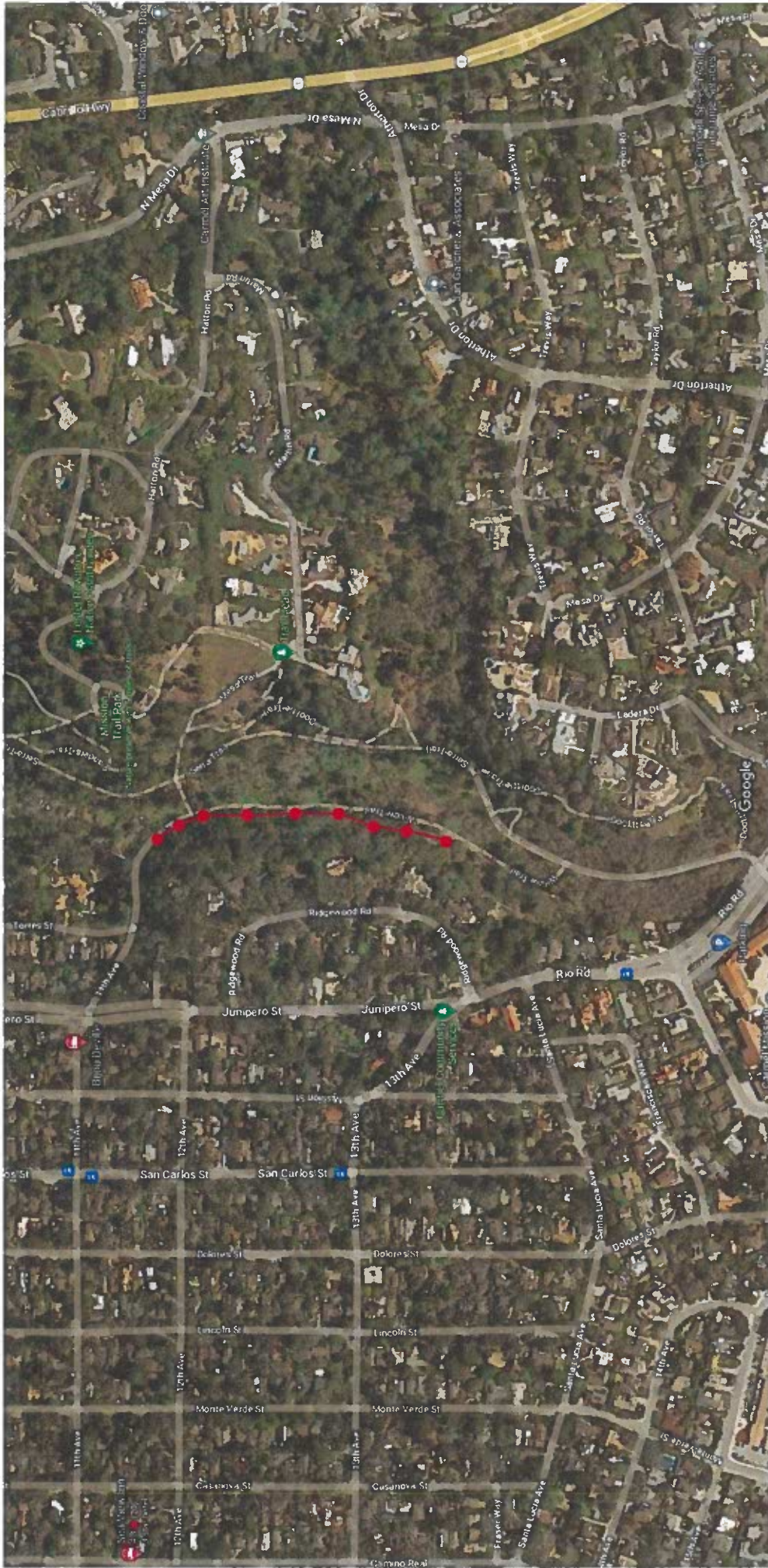
**City Limits**

**Underground Utility District 2**  
 Located at MTNP, on the west side of Willow Trail from the Entrance Gate at 11th Ave south +/-1,100'

**EXHIBIT 2**  
**PAGE 2 OF 2**







Imagery ©2023 AMBAQ, Data ©2023 SINA, CA, OPC, Measur, Technologies, USGA/PPAC/REG, Map data ©2023 200 ft

**+/- 9 Poles**  
**+/- 1,100 LF**



Potential undergrounding at MTP, Willow Trail from 11<sup>th</sup> Ave South