

# L'AUBERGE CARMEL

1 Monte Verde Street at Seventh Ave.



Photo #1, Main façade looking South along Monte Verde



Photo #2, Main façade looking North along Monte Verde

Photos by Jenna Tyndall from Wald, Ruhnke and Dost Architects (June 28, 2021)



Photo #3, North elevation looking from City Hall parking lot



Photo #4, Partial South elevation looking from Seventh Avenue





Photo #5, radial plaster cracking at Southwest building corner



Photo #6, holes in foundation, plaster and tile at Southwest corner



Photo #7, hairline cracking in plaster above double windows by main entry



Photo #8, radial cracking in plaster above main entry doors.





Photo #9, holes in foundation near Northwest building corner



Photo #10, cracked step/foundation at Northwest building corner





Photo #11 window sill at North side of building



Photo #12, bent/damaged flashing at second level opening



Photo #10, weathered/oxidized roofing at central courtyard



Photo #11, damaged rafter tails at roof as seen from courtyard





Photo #12, rotted supports at exterior planter box

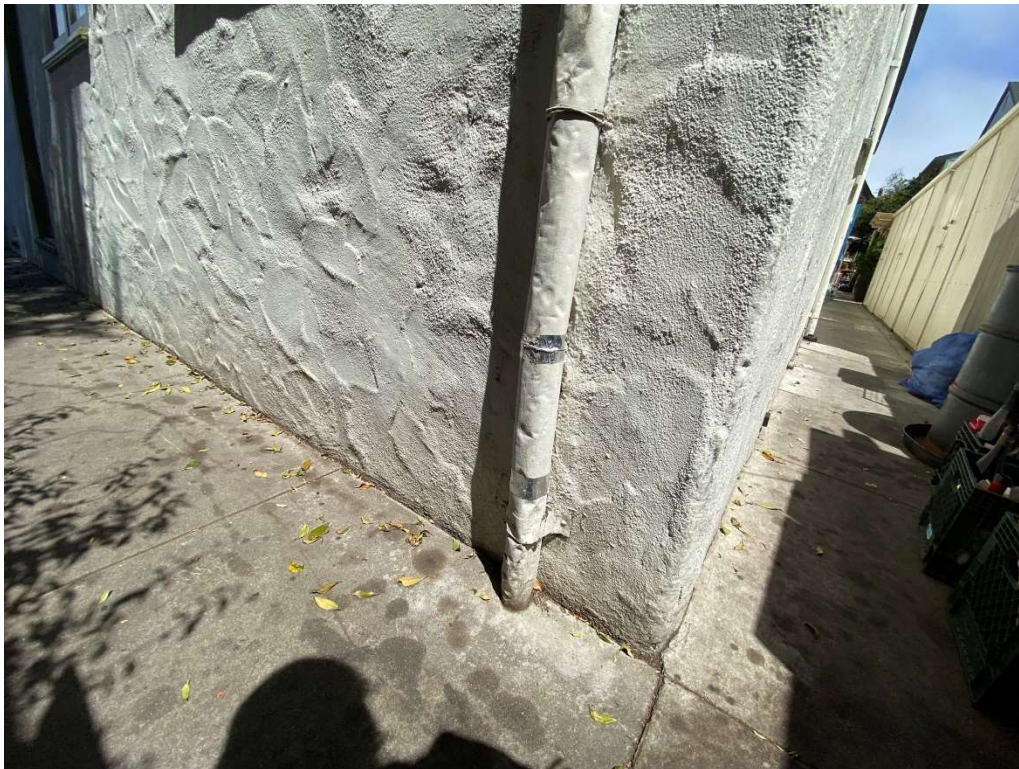


Photo #13, damaged downspout (typical condition at perimeter)





Photo 14, Water damage at upper-level balcony

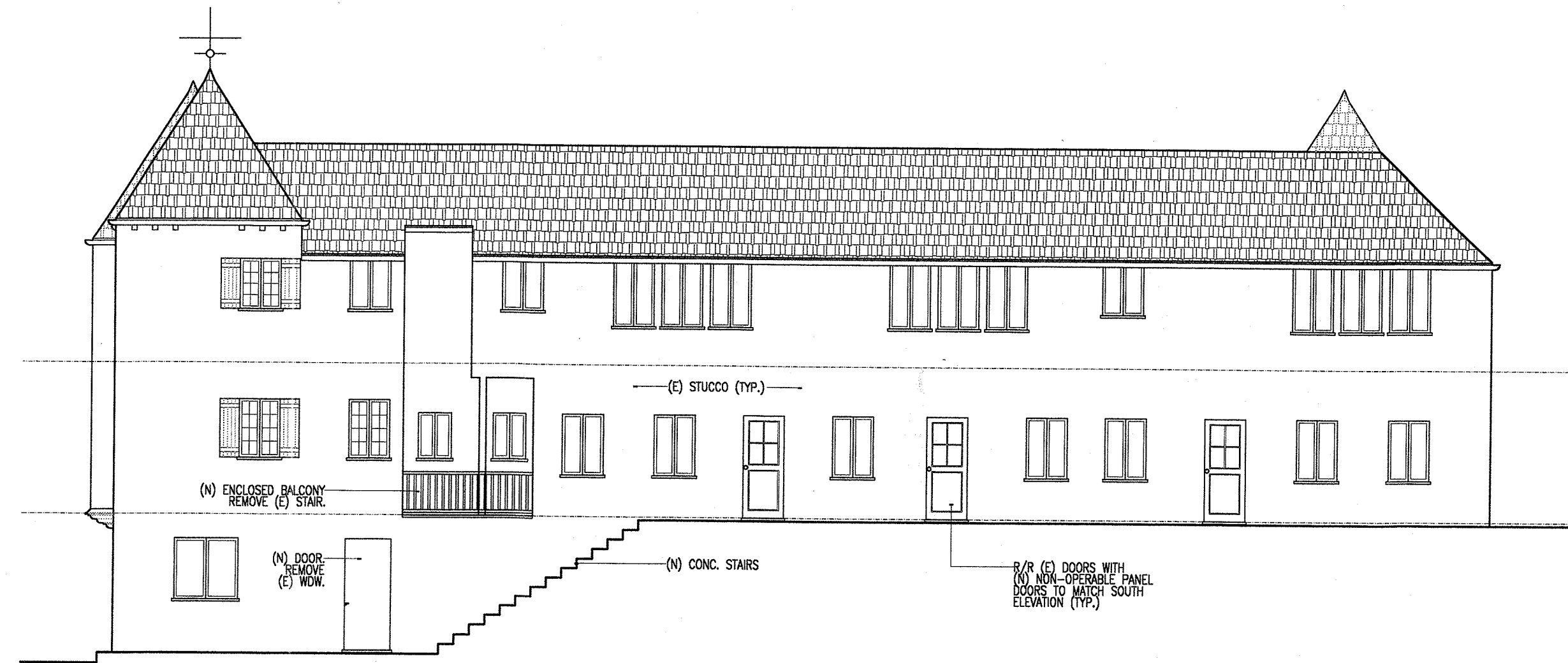


Photo 15, Existing retaining wall

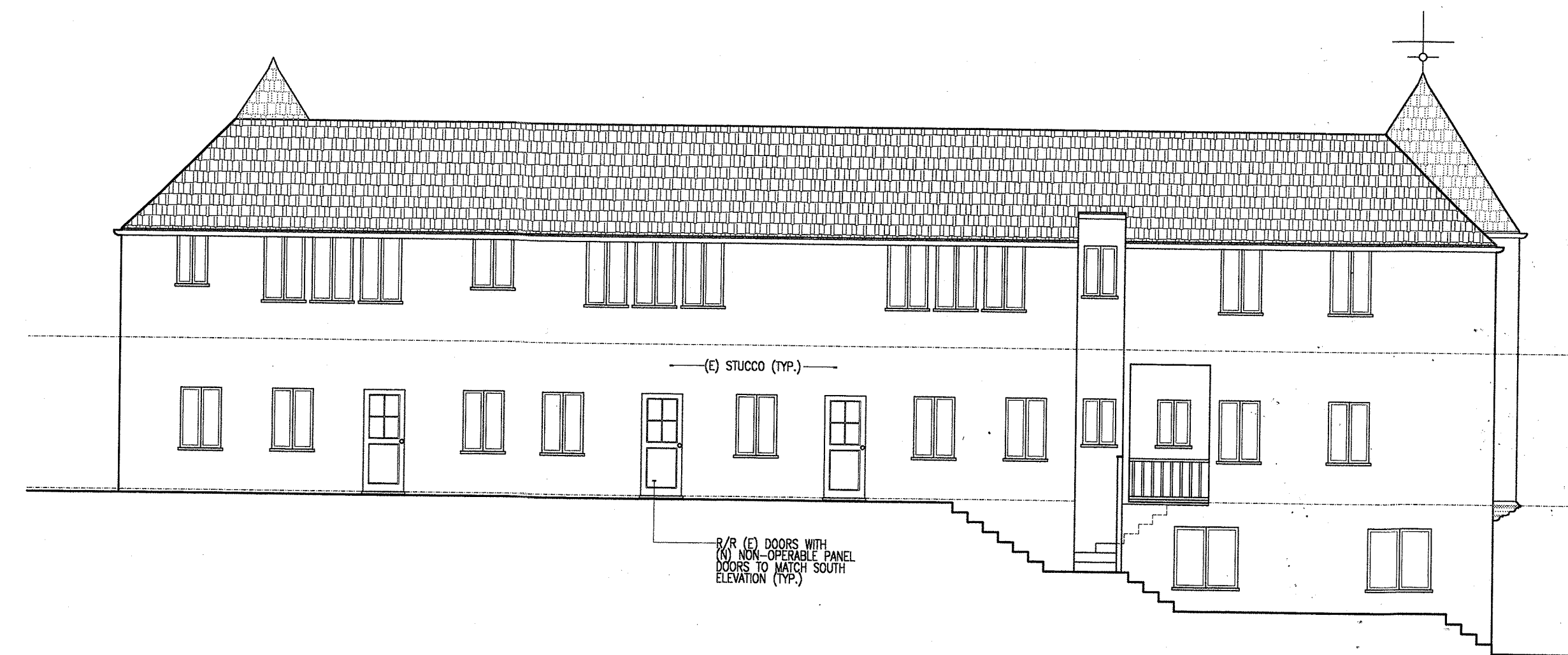




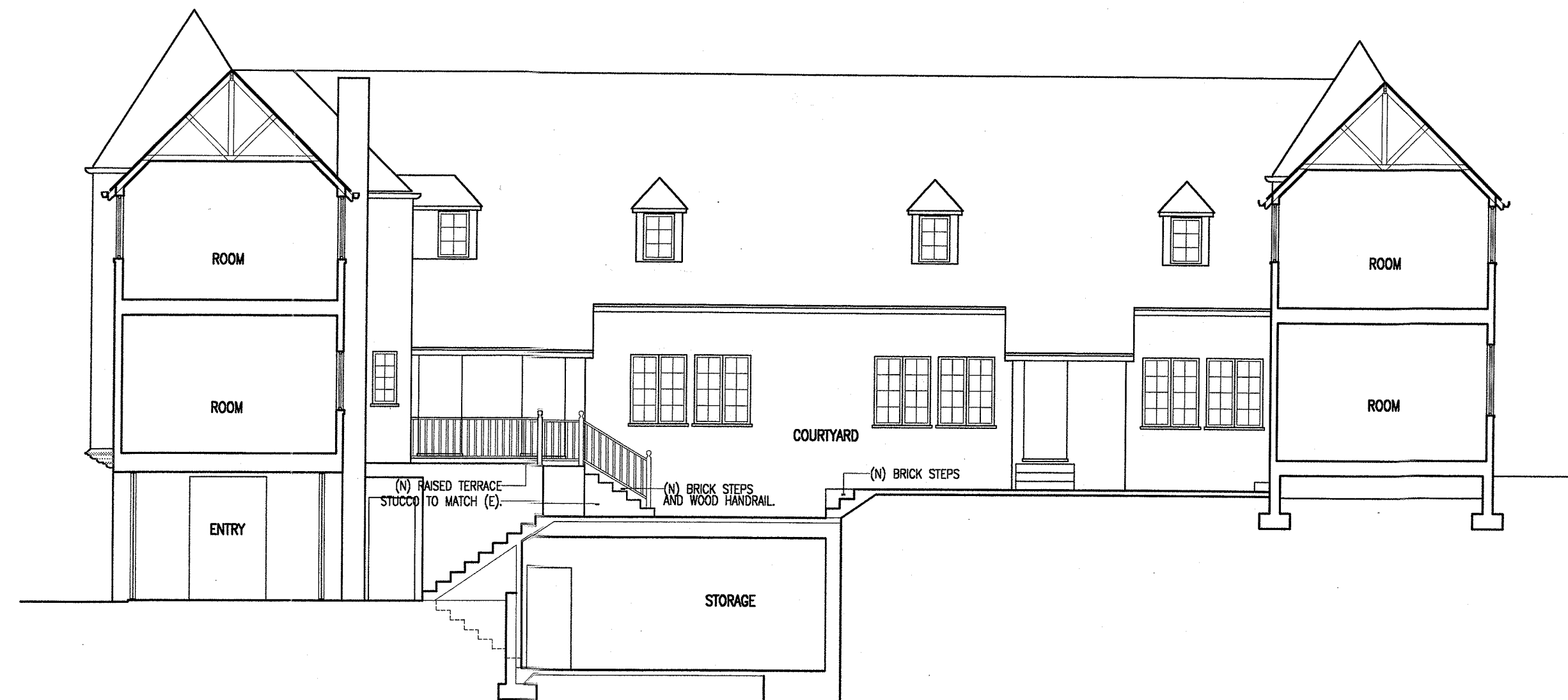
Photo 16, temporary surfact drainage at courtyard



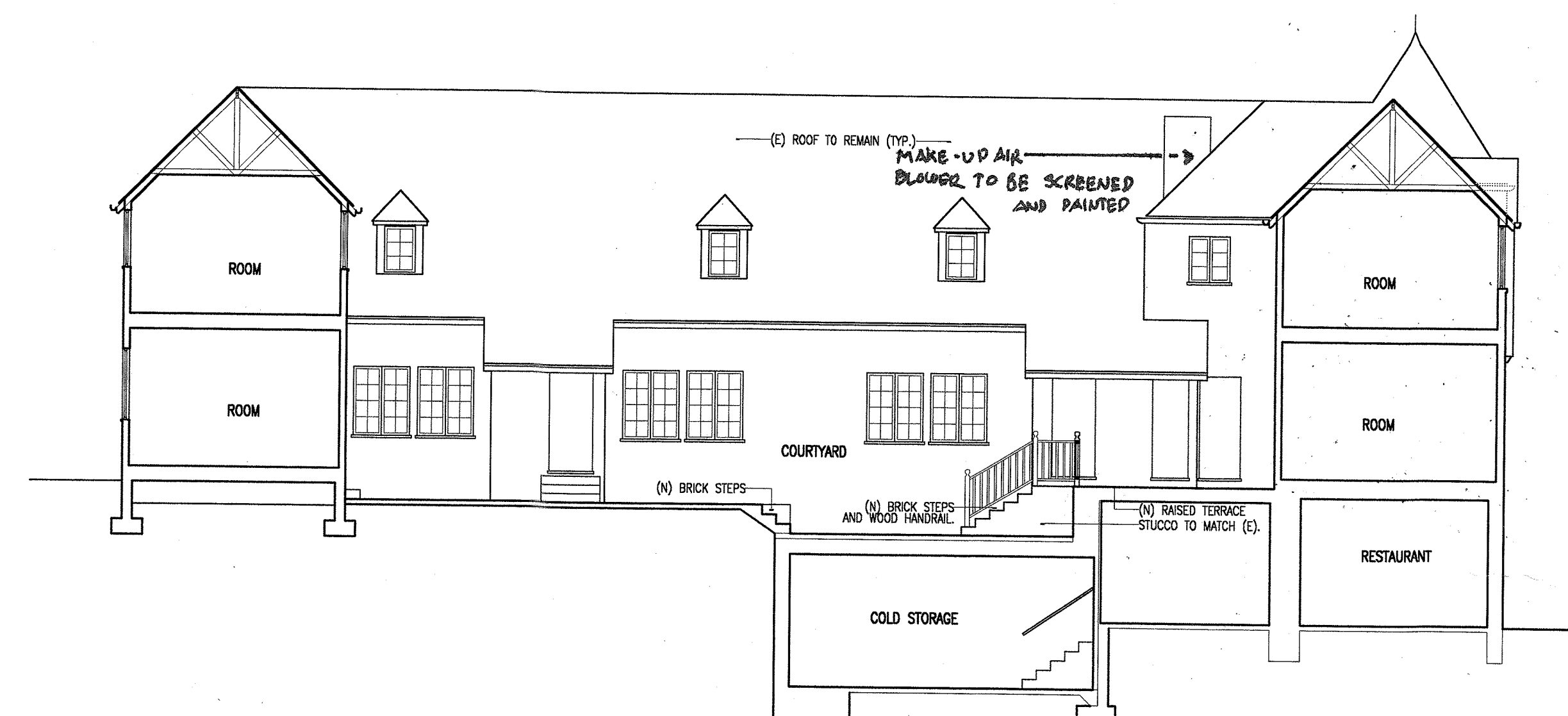
SOUTH ELEVATION



NORTH ELEVATION



SECTION 'A' AND SOUTH COURTYARD ELEVATION



SECTION 'B' AND NORTH COURTYARD ELEVATION

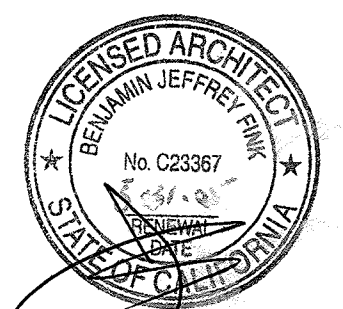


SECTION 'C' AND EAST COURTYARD ELEVATION



WEST ELEVATION

NOTE:  
REMOVE ALL EXTERIOR CONDUIT WHERE POSSIBLE.



REVISIONS

1	OCTOBER 22, 2003
2	
3	
4	
5	
6	

jeff fink and associates, architecture  
1421 BLAIR LANE TUSTIN, CA 92780  
tel 714 832-4103 fax 714 832-9185

AUBERGE CARMEL  
CARMEL, CALIFORNIA

SECTIONS AND ELEVATIONS

SCALE : 1/8" = 1'-0"  
APRIL 10, 2003

A5